

COLLARS AND TAPS

2.1B

Duct Board Assembled Start Collars

Description

Metal Zinc's duct board start collars create a connection between round pipe/flex and duct board plenums, transitions, triangles, and boxes

Features

2" Long "teeth" to allow connections to R4, R6, and R8 duct board

Crimped end allows easy connection to pipe

Ring keeps collar secure to duct board

Standard Construction

Manufactured from 28-gauge galvanized steel complying with ASTM A653

Sold in box/tray quantities

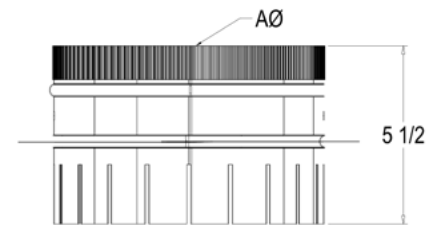
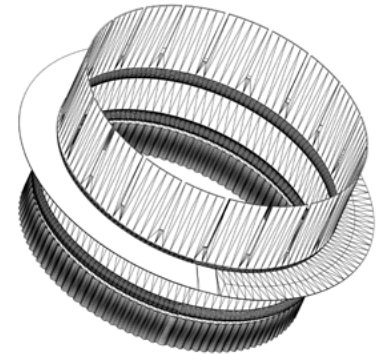
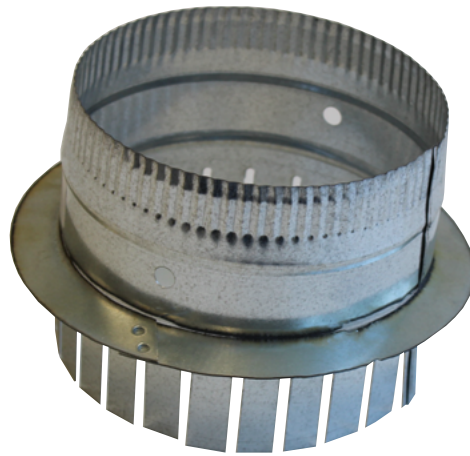
Optional Construction

Agion (Antimicrobial)

Galvanneal (Paint Grip)

PCD

Stainless Steel 304 and 316



Packaging

Metal Zinc Part Number	Size A Inches	Gauge	Box/Tray Quantity	Pallet Quantity
DBSCAS04	4	28	95	1,140
DBSCAS05	5	28	45	540
DBSCAS06	6	28	45	540
DBSCAS07	7	28	25	300
DBSCAS08	8	28	25	300
DBSCAS09	9	28	15	180
DBSCAS010	10	28	15	180
DBSCAS012	12	28	12	144
DBSCAS014	14	28	9	108
DBSCAS016	16	28	5	60
DBSCAS018	18	28	5	60
DBSCAS020	20	28	5	60
DBSCAS022	22	28	5	60
DBSCAS024	24	28	5	60