

COLLARS AND TAPS

2.2A

## Sheet Metal Snap Together Start Collars

### Description

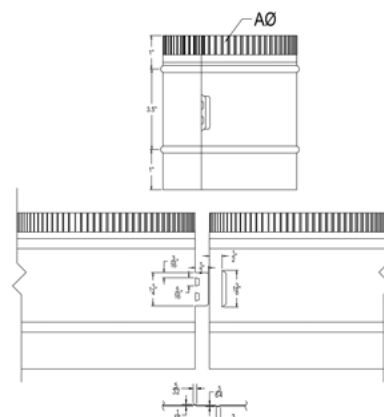
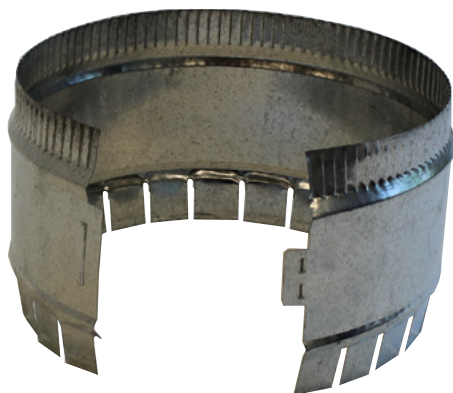
Metal Zinc's sheet metal snap together start collars create a connection between round pipe and metal plenums, transitions, and triangles

### Features

"Teeth" makes connection to sheet metal easy and secure

Crimped end allows solid connection to pipe

Banded together for more efficient storage



### Standard Construction

Snap together construction using 28-gauge, ASTM 653 galvanized steel

Sold in bundle or box quantities

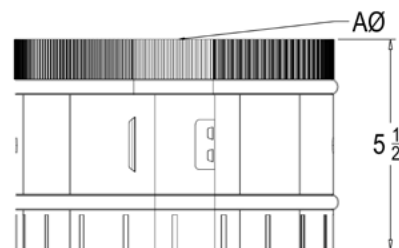
Optional Construction

Agion (Antimicrobial)

Galvanneal (Paint Grip)

PCD

Stainless Steel 304 and 316



### Packaging

Metal Zinc Part Number	Size A Inches	Gauge	Bundle/Box Quantity	Pallet Quantity
SCSP04	4	28	10/20	400/1280
SCSP05	5	28	10/20	400/1280
SCSP06	6	28	10/20	360/1280
SCSP07	7	28	10/20	240/1280
SCSP08	8	28	10/20	240/1280
SCSP09	9	28	10/20	120/1280
SCSP10	10	28	10/20	120/1280
SCSP12	12	28	10/20	90/1280
SCSP14	14	28	5/10	90/640
SCSP16	16	28	5/10	90/640
SCSP18	18	28	5/10	90/640
SCSP20	20	28	5/10	90/640
SCSP22	22	28	5/10	90/640
SCSP24	24	28	5/10	90/640