

# Economy Saddle Tap with Damper

## Description

Metal Zinc's Saddle Tap is used for medium and high pressure applications to aid in air distribution from round trunk lines to round ductwork.

## Features

Meets SMACNA requirements (2005 3rd Edition, Section 4.8 Figures 4-6)

Flange Measured to size of round pipe

Stitch welded seam for added strength and low leakage

Flange measured to size of round pipe

Pressure rating +10" water gauge

## Standard Construction

Manufactured using 26-gauge ASTM A653 G60

1" flange

1/8" X 1" two-sided neoprene gasket

## Optional Construction

G90-gauge galvanized steel

Agion (antimicrobial coating)

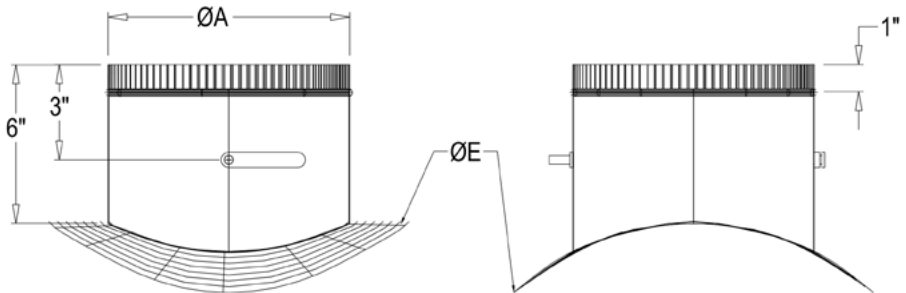
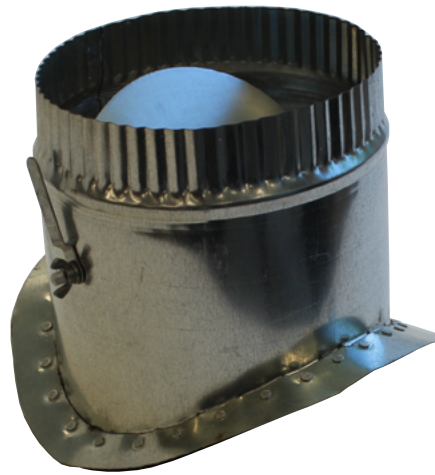
Aluminum

Crimp & Bead

Galvanneal (paint grip)

PCD

Stainless steel 304 and 316



## Packaging

Metal Zinc Part Number	Size A Inches	Row Quantity	Pallet Quantity
HI-PR-ST-4-VD	4	40	400
HI-PR-ST-5-VD	5	40	400
HI-PR-ST-6-VD	6	30	360
HI-PR-ST-7-VD	7	20	240
HI-PR-ST-8-VD	8	20	240
HI-PR-ST-9-VD	9	12	144
HI-PR-ST-10-VD	10	12	144
HI-PR-ST-12-VD	12	12	144
HI-PR-ST-14-VD	14	9	90
HI-PR-ST-16-VD	16	9	90
HI-PR-ST-18-VD	18	6	48