

Wall Stack

Description

Metal Zinc's Wall Stacks are used for air movement between wall studs or overhead space between the joists as either supply or return air ducts.

Wall Stacks are also used as exhaust for venting range hoods or kitchen and bath fans.

Features

Sections snap together with no tools needed

Notched corners for easily connecting sections

3¼" deep by 10" wide available (caps sold separately*)

Standard Construction

26-gauge galvanized steel ASTM A653

S-LOCK Rail

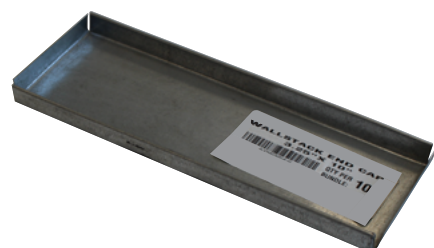
24", 36", 48" and 60" long sections

100 per pallet

Optional Construction

12" and 14" wide also available

30-gauge galvanized steel



*End cap sold separately

Packaging

Metal Zinc Part Number	A x B	Length	Flange Out	Pallet Quantity
WLSTK325x10x24	3.25 x 10	24"	None	100
WLSTK325x10x36	3.25 x 10	36"	None	100
WLSTK325x10x48	3.25 x 10	48"	None	100
WLSTK325x10x60	3.25 x 10	60"	None	100
WLSTKEC32510	3.25 x 10	.5"	Cap	3200