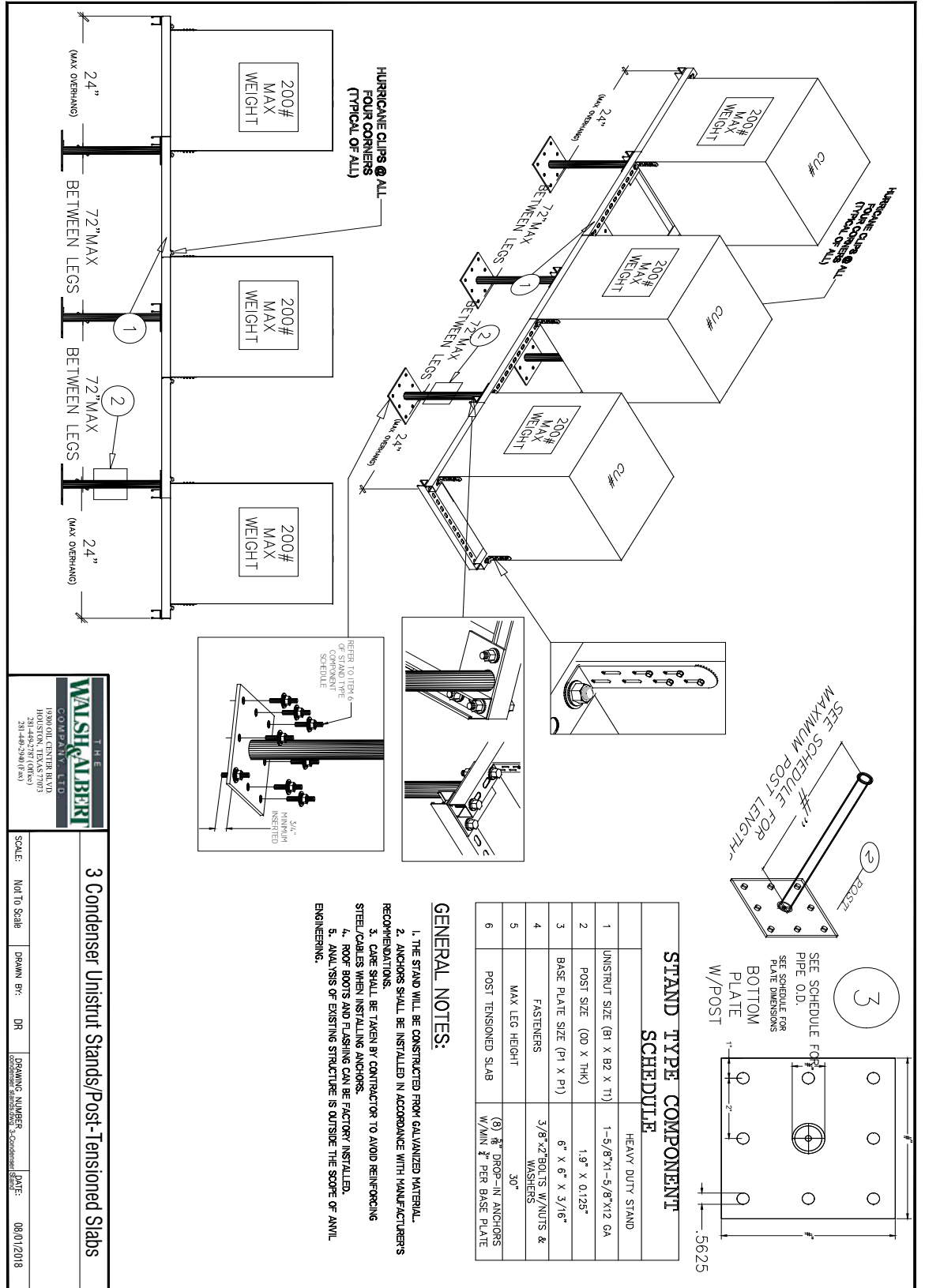


3 Condenser Unistrut Stands/Post - Tensioned Slabs



STAND TYPE COMPONENT SCHEDULE	
1	UNISTRUT SIZE (B1 X B2 X T1)
2	POST SIZE (OD X THK)
3	BASE PLATE SIZE (P1 X P1)
4	FASTENERS
5	MAX LEG HEIGHT
6	POST TENSIONED SLAB

GENERAL NOTES:

1. THE STAND WILL BE CONSTRUCTED FROM GALVANIZED MATERIAL.
2. ANCHORS SHALL BE INSTALLED IN ACCORDANCE WITH MANUFACTURER'S RECOMMENDATIONS.
3. CARE SHALL BE TAKEN BY CONTRACTOR TO AVOID REINFORCING STEEL/CABLES WHEN INSTALLING ANCHORS.
4. ROOF BOOTS AND FLASHING CAN BE FACTORY INSTALLED.
5. ANALYSIS OF EXISTING STRUCTURE IS OUTSIDE THE SCOPE OF A/VIL ENGINEERING.

THE WALSHE ALBERT COMPANY, LTD
 10300 OIL CENTER BLVD
 HOUSTON, TEXAS 77033
 281-482-8700 (FAX)
 281-482-5236 (FAX)

3 Condenser Unistrut Stands/Post-Tensioned Slabs

SCALE: NOT TO SCALE DRAWN BY: DR DRAWING NUMBER: SCHEMATIC DATE: 08/01/2018